



**CPEC  
GLOBAL**  
Your Partner in precision parts

# **GROW YOUR BUSINESS WITH US CPEC GLOBAL**

Coimbatore Precision Engineering Components (CPEC) - is a global industrial parts supplier.

[www.cpec-global.com](http://www.cpec-global.com)





# Contract Manufacturing & Offshore Procurement Services Company



## Manufacturing:

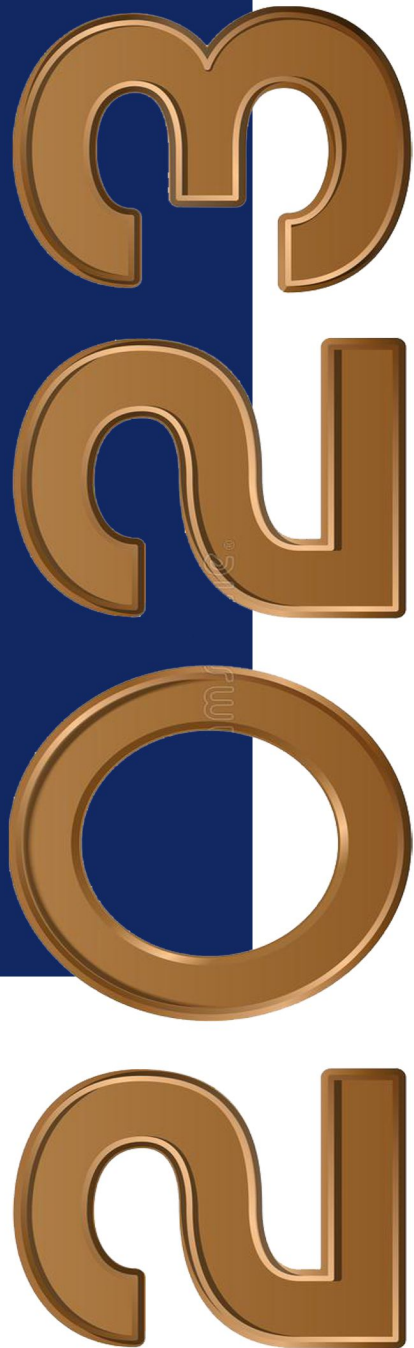
We are equipped with Pressure Die Casting presses & Machining centres on a limited scale

## Services

We are specialized in Supply chain activities right from Procurement Services, Factory Audits , Inspections & Trading

## ABOUT BUSINESS

We are an ISO Certified global supplier of Precision Industrial Engineering Components, Parts & Subassemblies. We have helped some of the world's major product manufacturers to setup their offshore procurement activities and supplied class one parts.



***“And the day came when the risk to remain tight in a bud was more painful than the risk it took to blossom,”***

◆ Anais Nin ◆

**Let's Go!** →

In the world of ever-growing challenges, CPEC delivers sustainable support for our partners to compete in the global market.

**2 Partners & 1 Team**

**(Customer & Us)**







## ABOUT US

# WELCOME TO CPEC GLOBAL



**CPEC  
GLOBAL**  
Your Partner in precision parts

An ISO 9001 : 2008 certified company with over 18 years of expertise by our managerial team. We are focused on achieving endless growth, providing excellent service and conducting business ethically.

## ◆ What we do?

- Aluminium Die Cast Rotors & Motor Components
- Custom Industrial Engineering Parts
- Procurement Services
- 3D Printing & Prototyping
- Factory Audits
- Quality Control





## WHAT YOU WILL GET ?

Your Partner from the World's #1 Sourcing Destination

Not just the vibrant young team led by Experienced Professionals in the Cross Border Business.

- 4 Global Partners
- 3 Group Companies
- 2M+ Parts Annually
- 18 Years Experience
- 200+ Suppliers
- 30+ Manufacturing Process





# VIRTUAL OFFICE

**Offshore Team to handle all  
your supply chain operations in the  
Incredible India**

**GROW YOUR BUSINESS**

**❖ PARTNER WITH US !!  
PLAN YOUR SOURCING FROM INDIA.!**

Our people onboard work particularly for your company with regards to floating inquiries till boarding goods on vessels our engineers & staff will work on your boots on the ground.

**LETS START →**







## IN-HOUSE CAPABILITIES

Our In-house facility includes a range of CNC Machining centres & Die Casting presses providing complicated parts & intricate assembly services,



## MACHINED COMPONENTS

We have provided the most sophisticated CNC machined parts made from the following materials

- ▶ Aluminum Alloys of 3000, 5,000, 6000 & 7000 series
- ▶ Brass
- ▶ Bronze
- ▶ Copper
- ▶ PEEK
- ▶ Teflon
- ▶ Stainless Steel Grade & Duplex Materials
- ▶ Inconel & Monel

# SUB-ASSEMBLIES

We collaborate with you to manufacture and obtain the necessary sub-components you need in-house for more complex sub assemblies in addition to providing machined components.

**We carry out a variety of sub-assembly activities, some of which include:**

- ★ General components assembly
- ★ Motor Electric Windings
- ★ Gears & Drive shafts
- ★ Heavy Engineering Fabrications, etc





# ALUMINIUM DIE CAST ROTORS & COMPONENTS



We have manufactured hundreds of millions of rotor cores, and utilizes fully automated horizontal, and high pressure die casting systems. Our advanced capabilities and expertise enable us to produce a wide variety of die casting solutions, from small fractional horsepower motors (FHP) to the most complex Pumps & Induction, Traction Drive applications

We do support global motor manufacturers with motor components right from stator rotor windings till shaft assembly,

❖ Lamination Cutting

❖ Rotor Stacking & Skewing

❖ Die Casting & Shaft Insertion



# PROCUREMENT SERVICES

- ❖ Your gateway to 500s of subcontract manufacturers in PAN India
- ❖ Upload your project today and speak directly to our executives to help you produce your components and assemblies.

## CASTINGS:



**Investment Castings**

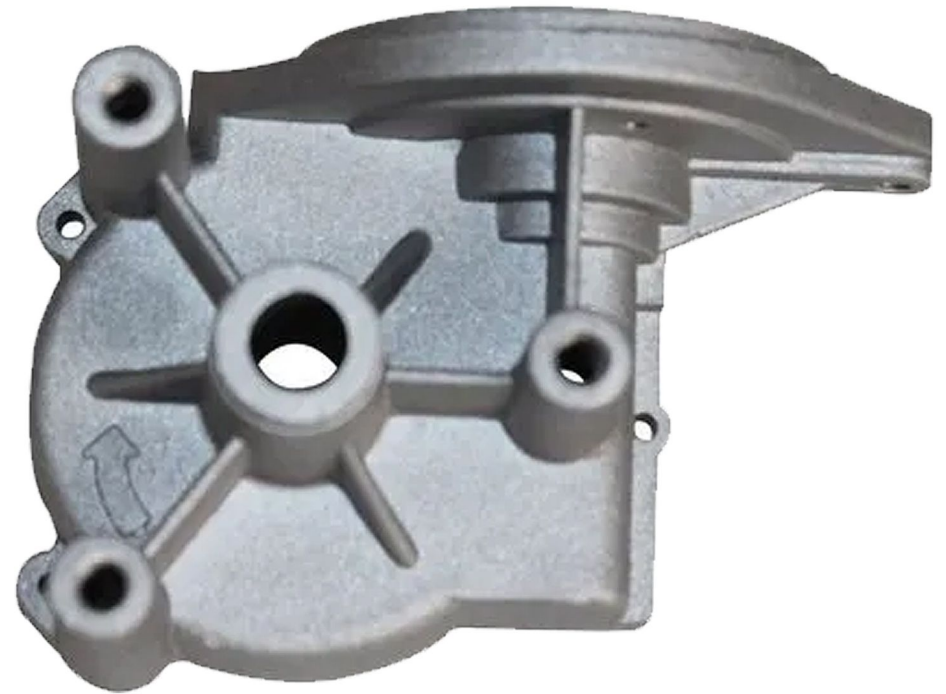


**Sand Castings**





**Forgings**



**Pressure Die Castings**









## Industrial Hardwares



## Bathwares & Fittings





# MATERIAL STORAGE & HANDLING EQUIPMENTS



- Platform Trolleys
- Pallet trucks
- Storage Bins
- Storage Racks for custom products
- Tools Storage
- Ramps
- Safety Ratchets with Straps
- Additional Hardware's, etc.,





## CONTACT US

# KEEP IN TOUCH



No.319-A, Sri Ram Nagar, 3rd Street,  
Peelamedu, Coimbatore – 641004.



+91 97516 61778



info@cpec-global.com  
www.cpec-global.com



**CPEC  
GLOBAL**  
Your Partner in precision parts



COIMBATORE  
**NEXT**

